

060-0201  
Trailer Latch



060-0251  
With Deadbolt



**DESIGNED FOR:**

- Travel trailer entrance doors
- RV baggage doors or utility trailer
- All doors with thickness of 1-1/4" to 1-1/2" (other door thicknesses available -- please inquire)
- Universal applications -- either right or left handed

**Global Locations:**

**TriMark Corporation**  
500 Bailey Avenue  
P.O. Box 350  
New Hampton, Iowa 50659  
United States  
Tel: 641-394-3188  
Fax: 641-394-2392  
1-800-447-0343  
www.trimarkcorp.com

**TriMark Europe**  
Cedar Court  
Walker road  
Bardon Hill  
Coalville LE67 1TU  
United Kingdom  
Tel: +44(0)1530 512460  
Fax: +44(0)1530 512461  
www.trimarkeu.com

**TriMark (Xuzhou)**  
Building A5 Jingwu Road  
Xuzhou Economic  
Development Zone  
Xuzhou, Jiangsu  
221004 PR China  
Tel: +86 516 8773 0018  
Fax: +86 516 8773 0058  
www.trimarkcn.com



TriMark. Interactive. Product. Selector



TriMark



TriMark Corporation

### FEATURE/BENEFITS:

- Paddle can be locked before door is shut
- Paddle is rigid when locked
- Automotive styling
- Comfortable finger access
- Inside assist for easy door closing
- Water resistant

### AVAILABLE:

- With optional built-in deadbolt (060-0251 Series)
- Reversible key for ease of operation
- With or without inside release (060-0201 Series)
- Reverse plunger for inward swinging doors (optional)
- KeyOne™ Plus



### INSTALLATION:

- Requires (4) #8-32 thread forming fasteners (Available-please inquire)

### MATERIAL:

- Major components: die cast zinc alloy
- Strike plate (standard version): die cast zinc alloy
- Strike plate (optional deadbolt version): Steel or non-corrosive stainless steel
- Non-metallic plunger

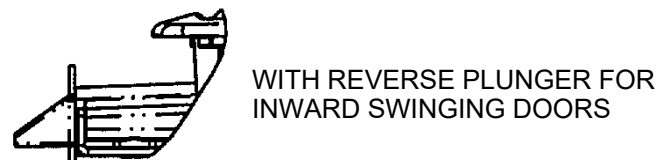
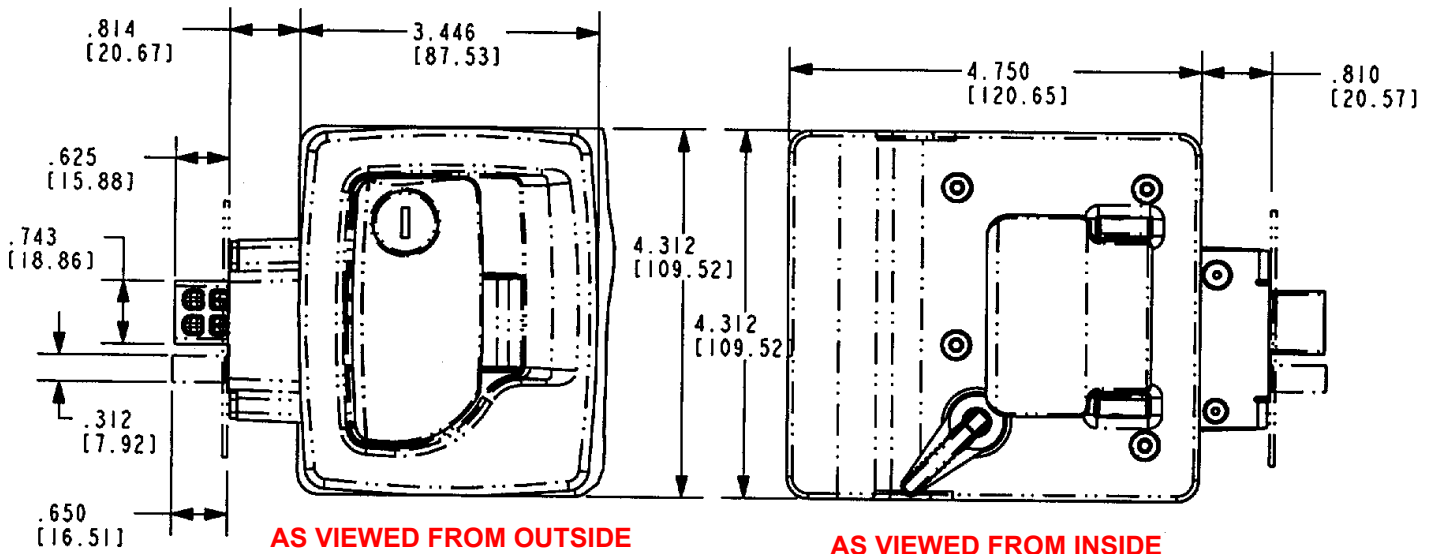
### FINISH:

- Black powder coated or white
- Strike plate (standard version): black powder coating
- Strike plate (optional deadbolt version): zinc plated

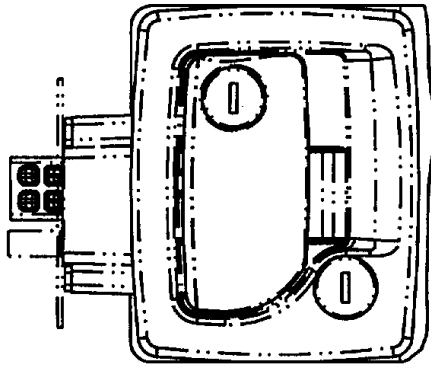
**CAUTION:** Latch does not meet FMVSS 206 (ECE R11) load requirements.

For more information visit  
[www.trimarkcorp.com](http://www.trimarkcorp.com)

### 060-0201 With Inside Lock



### 060-0251 With Built-In Deadbolt Lock

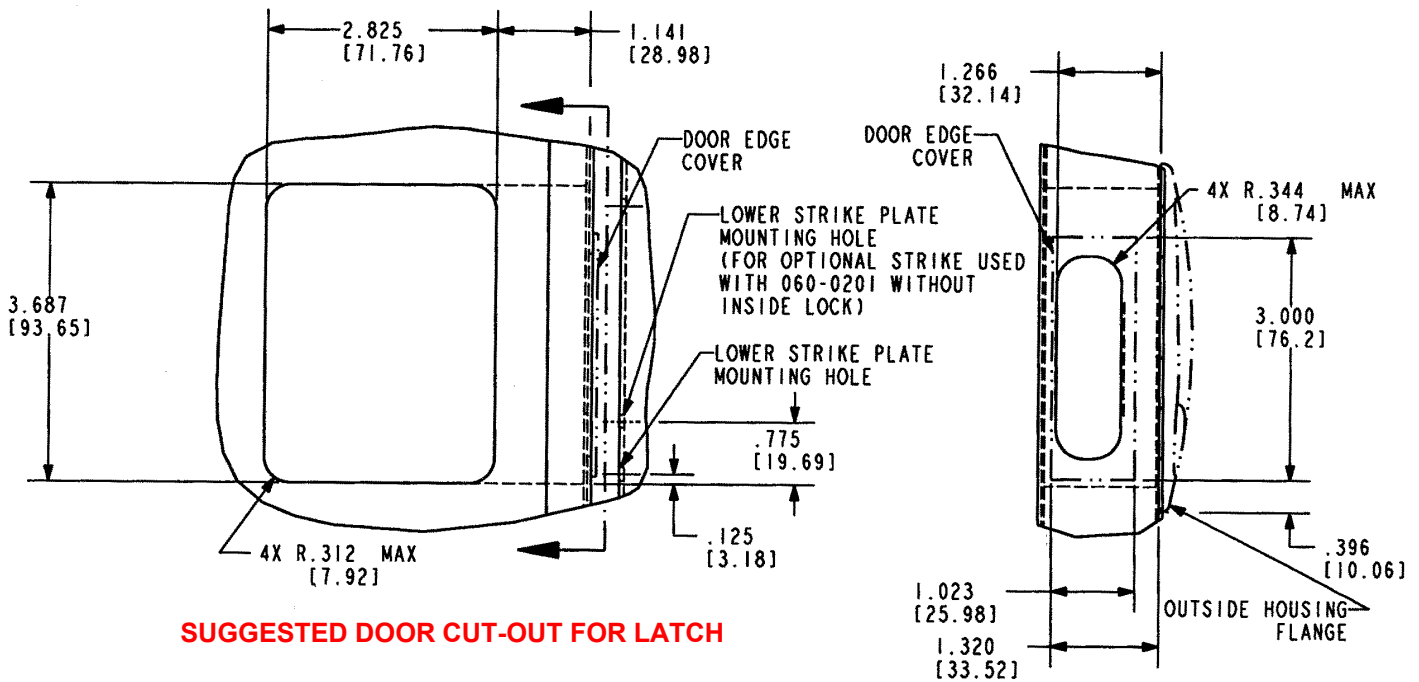


**AS VIEWED FROM OUTSIDE**

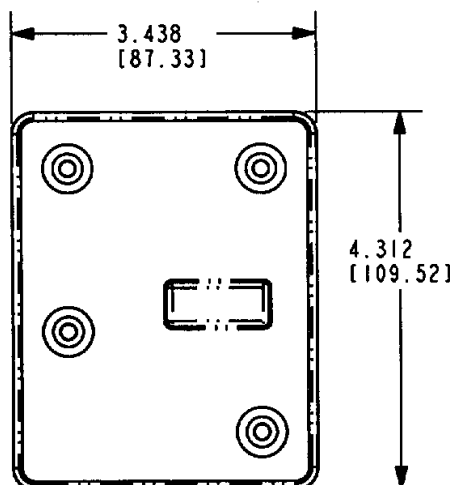
#### 060-0251 DEADBOLT FEATURES:

- Built-in deadbolt eliminates the need for an add-on residential type deadbolt
- Requires the same cut-out detail as the standard latch assembly (060-0200/0250/0201)
- Same fasteners may be used for all versions
- Dead bolt locks into the fully extended position for true deadbolt functioning
- Master keying is standard for paddle key cylinder

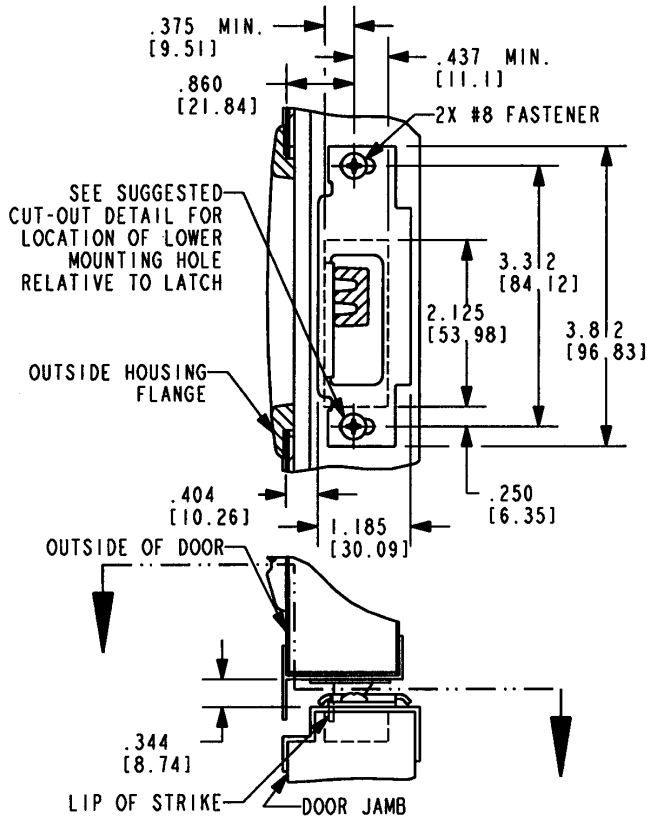
Individual part dimensions are for reference only. Refer to individual part drawings for complete dimensions, specifications, and installation procedures. Engineering assistance and application drawings are available.



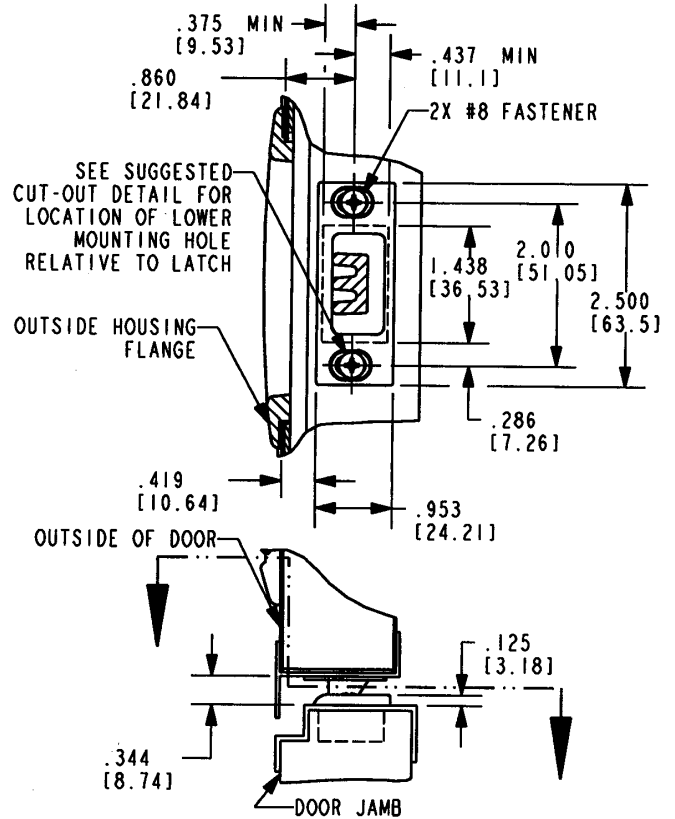
**SUGGESTED DOOR CUT-OUT FOR LATCH**



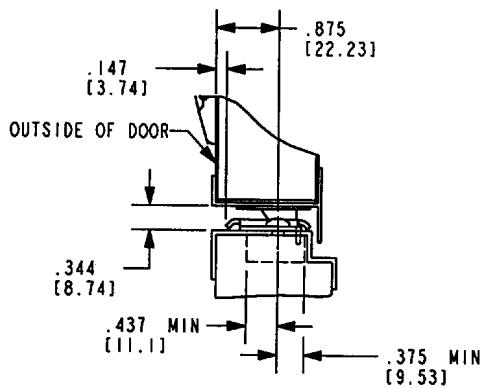
**INSIDE PLATE USED WITH 060-0201 FOR  
NON-ENTRY DOOR APPLICATIONS**



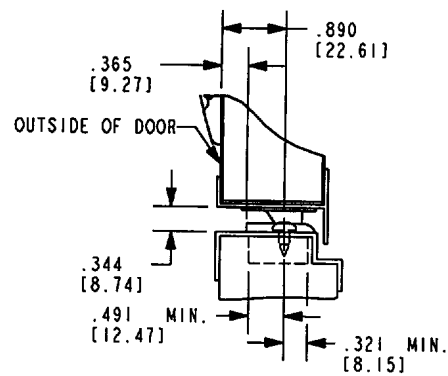
**STAMPED STEEL STRIKE PLATE FOR  
060-0201 WITH INSIDE LOCK OR 060-0251**



**DIE CAST STRIKE PLATE FOR  
060-0201 WITHOUT INSIDE LOCK**



**STAMPED STEEL STRIKE PLATE FOR  
060-0201 WITH INSIDE LOCK OR 060-0251  
WITH INWARD SWINGING DOOR**



**DIE CAST STRIKE PLATE FOR  
060-0201 WITHOUT INSIDE LOCK  
WITH INWARD SWINGING DOOR**